



2011-2016 SUMPTER TOWNSHIP 5-YEAR PARKS AND RECREATION MASTER PLAN



Draft for Township Board Adoption
November 1, 2010

A C K N O W L E D G E M E N T S

Township Board

Johnny Vawters, Supervisor
Clarence J. Hoffman, Clerk
John W. Morgan, Treasurer
Alan D. Bates, Trustee
William Hamm, Trustee
Linda L. Kennedy, Trustee
Peggy Morgan, Trustee

Parks and Recreation Commission

Craig Moody, Chairman
Don Swinson, Co-Chairman
Shauna Spoonamore, Secretary
Drusilla Allen
Alan Bates
Charles Hendricks
Becky LaPalme
Russell LaPalme
Barb Moody
Tiffany Moody
Bud Morgan
James Newton
Laura Newton
Richard Pokerwinski
Sharon Pokerwinski
Kevin Rochon
Margaret Rochon
Joan Posegay
Jim Posegay
Holly Swinson
Cheryl Toms
Kim Toms
Peggy Morgan, Township Board Liaison

Assisted by: Carlisle/Wortman Associates, Inc.

CONTENTS

INTRODUCTION

What this Plan Contains.....	1
Planning Process	1

COMMUNITY DESCRIPTION

Population and Housing.....	4
Land Use Pattern and Development Trends.....	6
Natural Features	9
Planning Initiatives	11

ADMINISTRATIVE STRUCTURE

Administration	13
Funding and Budget.....	14
Volunteers and Partnerships.....	14

RECREATION INVENTORY

Parks and Recreation Facilities in Sumpter Township.....	15
Recreation Programs and Services	21
Parks and Recreation Facilities around Sumpter Township	22
Comparison to Recreation Standards.....	26
Accessibility Assessment and Grant Assisted Projects	27

NEEDS ASSESSMENT AND PUBLIC PARTICIPATION

National Recreation Trends	29
Public Meeting	31
Public Review and Public Hearing	33

GOALS AND OBJECTIVES	35
-----------------------------------	-----------

ACTION PROGRAM

Action Plan	37
Project Schedule	44
Implementation Strategies	46

SUPPORTING DOCUMENTS

Notice of Draft Plan Availability and Public Hearing	51
Recreation Commission Resolution	52
Minutes of Public Hearing	53
Township Board Resolution	55
Letters of Transmittal	56

TABLES

Table 1.	Input Participation.....	2
Table 2.	Population, Household, and Housing Units, 2000-2035.....	4
Table 3.	Population Age, 2000-2035.....	5
Table 4.	Household Type, 2000-2035.....	5
Table 5.	2005 Land Use.....	6
Table 6.	Residential Building Permit, 2000-2009.....	6
Table 7.	Park and Recreation Fund Budget Summary.....	14
Table 8.	Regional Recreation Facilities.....	23
Table 9.	Comparison to Suggested Parkland Acreage Standards.....	26
Table 10.	Accessibility Assessment.....	28
Table 11.	MDNRE Grant Assisted Projects.....	28
Table 12.	National Sports Participation, 2008.....	29
Table 13.	Potential Park Improvements.....	31
Table 14.	Public Hearing Input.....	32
Table 15.	Project Schedule.....	44

FIGURES

Figure 1.	Location Map.....	3
Figure 2.	Population Growth, 1970-2035.....	4
Figure 3.	2005 Existing Land Use.....	7
Figure 4.	Natural Features.....	8
Figure 5.	Watersheds.....	9
Figure 6.	Pre-settlement Vegetation Circa 1800.....	10
Figure 7.	Regional Greenways Vision.....	12
Figure 8.	Sumpter Township Organizational Structure – Parks and Recreation.....	13
Figure 9.	Parks and Community Facilities.....	16
Figure 10.	Regional Parks around the Sumpter Township.....	22
Figure 11.	Detroit River International Refuge.....	24
Figure 12.	Bonatai Park Plan.....	38
Figure 13.	Graham Park Plan.....	40
Figure 14.	Community Center Plan.....	41

INTRODUCTION

The Sumpter Township Parks and Recreation Master Plan articulates a vision for parks and recreation in Sumpter Township. The most recent Parks and Recreation Master Plan was adopted in 2005. It included an action plan with park improvements which were mostly accomplished in the following years. Improvements to Graham Park have included the expansion of the parking lots, new picnic pavilions, horseshoe pits, and playground. At Bonatai Park, recent accomplishments have included the addition of drinking fountains, new picnic pavilions, a restroom building, a community-built playscape, split-rail fence around the park, and upgrade of the parking lot and drive gravel surface.

The purpose of the current Master Plan is to guide recreation planning and development efforts of Sumpter Township over the next five-year period, through 2015. Once adopted, the Plan is the official document to be used by the community to guide decisions regarding parks and recreation. The revised and updated Plan is intended to meet state standards for community recreation planning which are necessary to gain eligibility for grant programs.

WHAT THIS PLAN CONTAINS

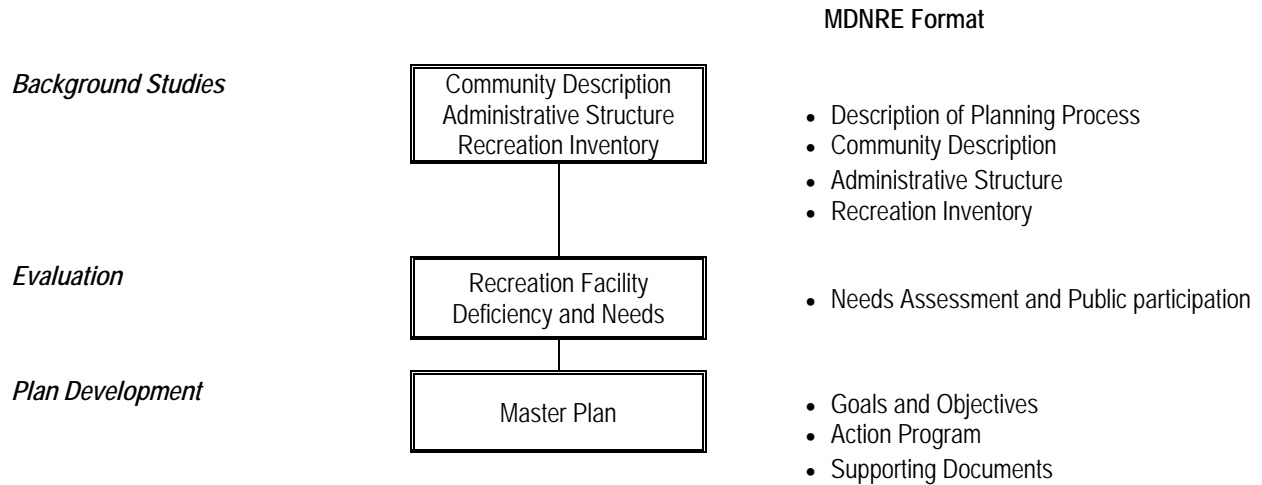
This Master Plan follows the format suggested by the Michigan Department of Natural Resources and Environment (MDNRE) in the *Guidelines for the Development of Community Park, Recreation, Open Space, and Greenway Plans* (2009). The **Community Description** chapter provides a summary on both the social and physical characteristics of the community. The **Administrative Structure** chapter includes a description of how parks and recreation services are administered in the community including budget and funding information. The next chapter, **Recreation Inventory** describes the existing parks and recreational facilities of the community as well as those of the state and the region located nearby. The **Public Participation** portion of the Plan presents the input received from local officials, staff, and residents, which helped in formulating the **Goals and Objectives** chapter. The **Action Program** chapter outlines an action plan and strategies for implementation. The final chapter, **Supporting Documents**, includes the resolutions and notices documenting the plan's adoption by the Township Board.

DESCRIPTION OF THE PLANNING PROCESS

The process used to generate the Plan consisted of three phases: background studies, evaluation, and plan development.

1. **Background studies** involved gathering and updating data from existing documents, plans, and from field observations. The data is organized into three main categories: community description, administrative structure, and recreation inventory.
2. The second phase in the planning process included the **evaluation** and analysis of the data to determine recreation facility deficiencies and needs. Public input to assess needs was sought at this level. A workshop was conducted where members of the public were encouraged to suggest improvements to the Township parks. Input from Township officials and the members of the Parks and Recreation Commission was also used.
3. Finally, the last phase in the process involved **Plan development** and adoption. Based on the identified needs, goals and objectives were formulated and a specific action plan and facility improvement schedule developed. Strategies to implement the Plan are also discussed.

The following diagram illustrates the planning process and its correspondence to the MDNRE format described earlier.



Sumpter Township recognized the importance of public participation in the recreation planning process. This Master plan was developed with input from Township officials, staff, community stakeholders, and residents. All meetings of the Parks and Recreation Commission were open to the public. The Plan was approved by Sumpter Township’s Parks and Recreation Commission on _____, 2010. It was also available for public review for a period of one month prior to the Parks and Recreation Commission approval. Finally, the Plan was subject to a public hearing prior to the Township Board adoption on _____, 2010.

Dates to be inserted

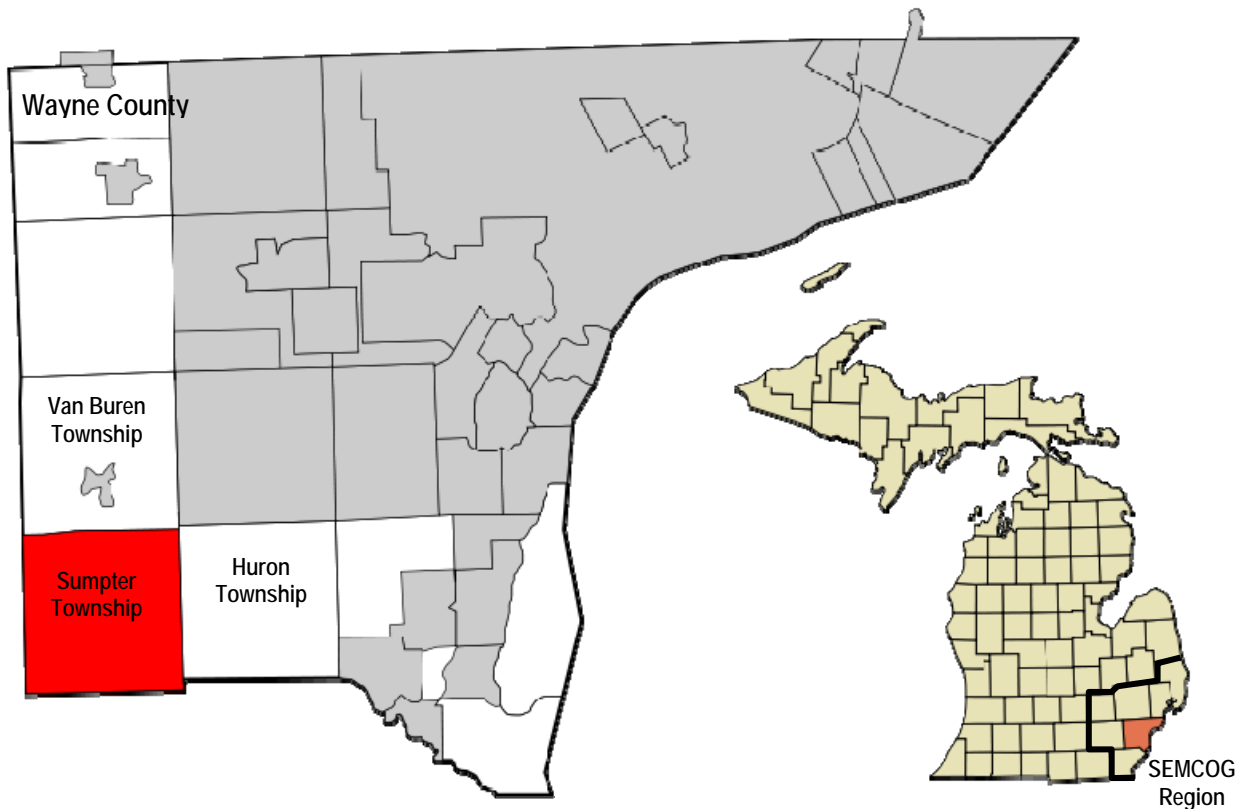
Table 1. Input Participation

	Community Description & Administrative Structure Recreation Inventory	Public Input	Goal Formulation	Action Program	Public Hearing	Plan Adoption
Township Board		√			√	√
Planning Commission		√			√	
Parks and Recreation Commission	√	√	√	√	√	
Township Staff	√	√	√	√	√	
Township Residents		√			√	

COMMUNITY DESCRIPTION

Sumpter Township is located in the southwest corner of Wayne County in southeast Michigan. The Township is bordered by Van Buren Township to the north, Huron Township to the east, Exeter Township (Monroe County) to the south, and Augusta Township (Washtenaw County) to the west (Figure 1). Sumpter Township is located between Detroit and Ann Arbor approximately 30 miles from both city centers. The City of Belleville is two miles to the north. There are no major transportation corridors that traverse the Township. The Wayne County airport is about 10 miles to the east.

Figure 1. Location Map



Source: Adapted from Wikipedia

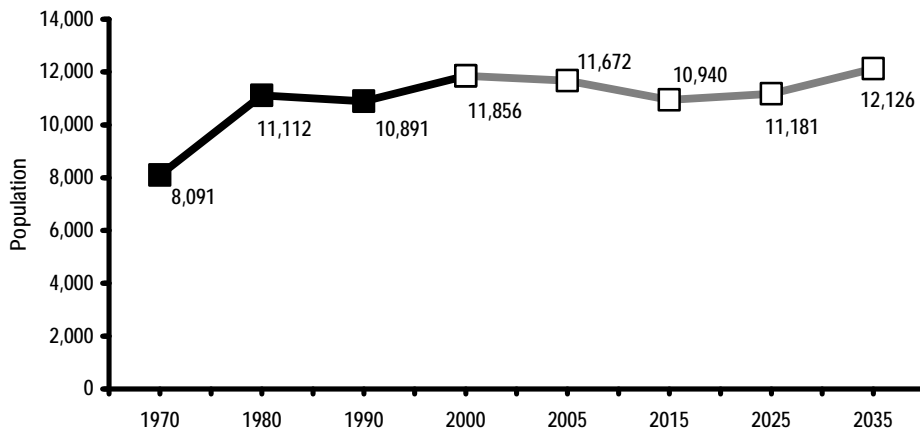
Wayne County is located in the Southeast Michigan Council of Governments (SEMCOG) region. SEMCOG is the regional planning agency that conducts planning studies and maintains a comprehensive database of information about each community it serves. It is a source for some of the population and land use related data included in this report.

In planning for the future recreation needs of the Township, it is essential to understand the community being planned for – both the community of people to be served and the recreation resources which the community has to offer. A determination of residents’ needs will define what types of recreational opportunities are desired, while an evaluation of the existing recreational resources will identify where and how these opportunities may be provided. The purpose of the first few chapters of the Master Plan is to provide an overview of the community’s characteristics and recreation resources with the goal of understanding the unique features and opportunities the community offers.

POPULATION AND HOUSING

Sumpter Township's population increased from 10,891 in 1990 to 11,856 in 2000. The 2000 number represents an 8% increase over the 1990 number. According to SEMCOG, the Township's population is currently estimated at 10,825 (December 2009). A 9% decrease over the 2000 number. However, the population is projected to be 12,126 by the year 2035, representing a 2% increase between 2000 and 2035.

Figure 2. Population Growth 1970 - 2035



Source: U.S. Census Bureau, Census 2000 and SEMCOG 2035 Regional Development Forecast

In 2000, the total number of households in Sumpter Township amounted to 4,110, an increase of 421 from the 1990 number. According to SEMCOG, the Township's total number of households is projected to be 5,019 by 2035, resulting in a 22% increase between 2000 and 2035. Between 1990 and 2000, the rate of increase in Sumpter Township's households, 11%, was greater than the rate of increase for population. This can be attributed to the Township's decreasing household size and is consistent with region-wide trends toward an overall decrease in household size.

The number of housing units increased from 3,848 in 1990 to 4,563 in 2000, representing a 19% increase between 1990 and 2000. SEMCOG estimates that Sumpter Township currently has 4,240 housing units (Dec. 2009), a 7% decrease over the 2000 number. The majority of the housing units, 60%, are single-family homes. Manufactured housing units account for 38% of the units. The remaining units include duplexes, townhouses or attached condos, and multi-unit apartments.

Table 2. Population, Household, and Housing Units, 2000-2035

	1990 Census	2000 Census	Dec. 2009 (SEMCOG)	2035 Forecast
Population	10,891	11,856	10,825	12,126
Households	3,689	4,110	n.a.	5,019
Housing Units	3,848	4,563	4,240	n.a.
Household Size	n.a.	2.88	2.82	2.41

n.a.: not available.

Source: SEMCOG

In summary, there has been an increase in population, households, and housing units between 1990 and 2000, and a decrease since 2000. SEMCOG's forecast shows, however, that increases will occur for both population and households, while household size will decrease.

Children age 17 or under make up 30% of the total population in Sumpter Township, while the number of people 65 years and over is 7%. Projections by SEMCOG indicate that while the proportion of children will slightly decrease to 25% by 2035, the number of people 65 years and over will significantly increase to represent 23% of the total population by 2035.

Table 3. Population Age, 2000-2035

	2000 Census		SEMCOG 2035	
65+	876	7%	2,777	23%
35-64	4,686	40%	3,967	33%
18-34	2,766	23%	2,334	19%
5-17	2,620	22%	2,170	18%
Under 5	908	8%	878	7%
Under 18	3,528	30%	3,048	25%

Source: U.S. Census Bureau, Census 2000 and SEMCOG 2035 Regional Development Forecast

Concurrently, households with children are predicted to decrease from 1,828 in 2000 to 1,641 in 2035 (10% decrease), while households with seniors 65 years and over will greatly increase from 666 in 2000 to 1,912 in 2035 (187% increase).

Table 4. Household Type, 2000-2035

	2000 Census		SEMCOG 2035	
Household with Seniors	666	16%	1,912	38%
Household with Children	1,828	44%	1,641	33%

Source: U.S. Census Bureau, Census 2000 and SEMCOG 2035 Regional Development Forecast

Sumpter Township is predominantly white (84%), with blacks the second major racial group (14%). Other races make up the balance of the population (2%). This racial composition is not expected to change substantially in the future.

LAND USE PATTERNS AND DEVELOPMENT TRENDS

Sumpter Township is primarily a rural community. Most region-scale commercial and retail development is located along the I-94 corridor to the north. According to the Township's Master Land Use Plan, the predominant land use in Sumpter Township is residential land use, occupying 48% of the total Township area. Agricultural land use makes up 30% of Sumpter Township's land area. The other land uses which include industrial, commercial, public/semi-public, and other land uses occupy the remainder of the Township's total area or 22%. Parks and recreation use makes up only about 3% of the Township's land area. Table 5 presents the land area for each land use category and Figure 3 shows the location of the existing land uses.

Table 5. 2005 Land Use

	Acres	Percentage
Agriculture	8,185	30.0%
Residential	11,198	48.0%
Commercial	842	2.8%
Industrial	1,598	8.8%
Institutional	8	0.2%
Public	118	3.2%
Quasi Public	62	1.7%
Parks and Recreation	121	3.3%
Transportation, Communication, & Utility	343	9.4%
Vacant	741	20.3%
Total Acres	3,646	100%

Source: Sumpter Township Master Plan, 2005

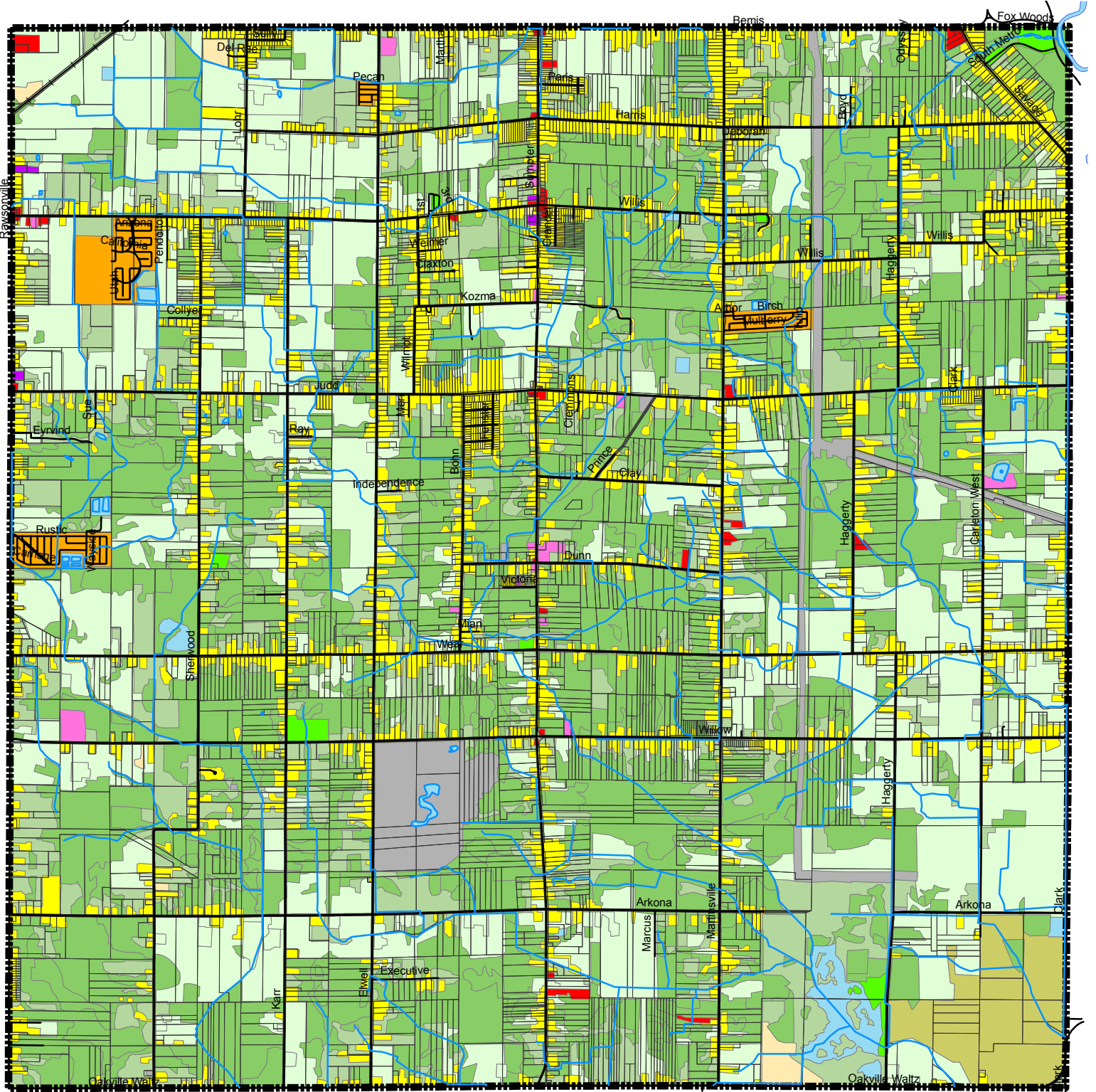
Despite the increase in population and housing units from 1990 to 2000, the SEMCOG region has experienced a decline in residential construction. Table 6 shows that this trend is also true for Sumpter Township, which has seen a decline in residential building permits issued since the mid 2000s.

The Township has planned for future growth with the update of its Master Land Use Plan in 2005. While modest growth in residential and commercial uses is envisioned, maintaining open spaces and the rural character of the Township are a priority.

Table 6. Residential Building Permits, 2000-2009

	Single Family	Total Demos	Net Total
2000	59	9	50
2001	49	10	39
2002	60	21	39
2003	48	18	30
2004	57	3	54
2005	54	9	45
2006	41	9	32
2007	14	8	6
2008	7	3	4
2009	3	1	2
Total	392	91	301

Source: SEMCOG



Legend

- | | | | |
|------------------------------------------------------------------------------------|---------------------------|-------------------------------------------------------------------------------------|-------------------------------------------|
|  | Agriculture |  | Cultural, Outdoor Recreation & Cemetery |
|  | Single-Family Residential |  | Transportation, Communication & Utilities |
|  | Commercial & Office |  | Extractive |
|  | Institutional |  | Woodland & Wetland |
|  | Industrial |  | Grassland & Shrub |
|  | Manufactured Home Park |  | Water |
|  | Under Development | | |

2000 LAND USE

Sumpter Township
Wayne County

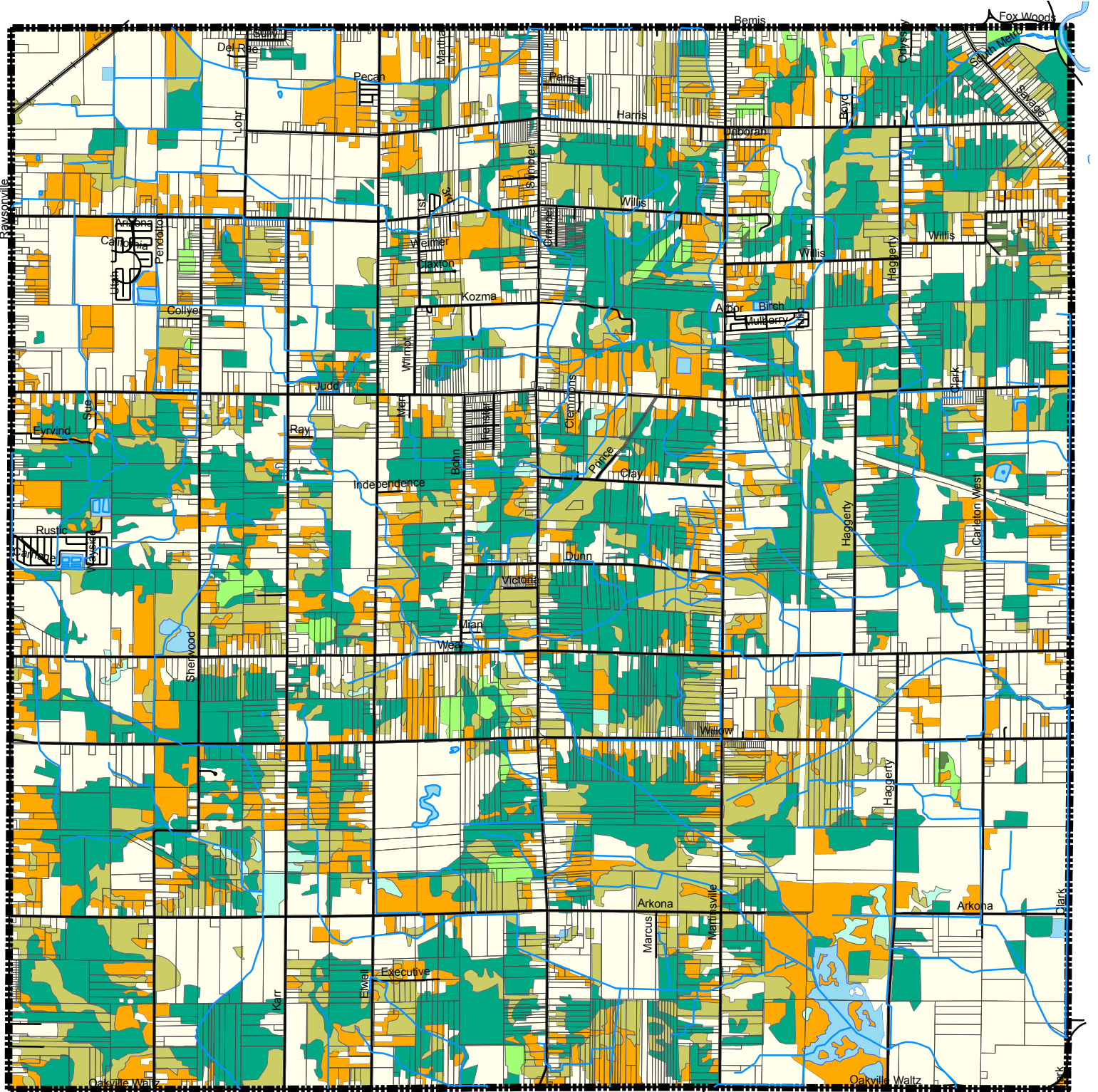


0 2,500 5,000 Feet

Source: SEMCOG Data
5-7-2010

Carlisle/Wortman Associates



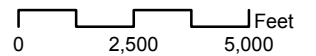


Legend

- Hardwood Forest
- Coniferous Forest
- Herbaceous/Shrub Land
- Wooded Wetland
- Shrub/Scrub Wetland
- Emergent Wetland
- Water

NATURAL FEATURES

Sumpter Township
Wayne County



Source: SEMCOG Data
6-5-2010

Carlisle/Wortman Associates



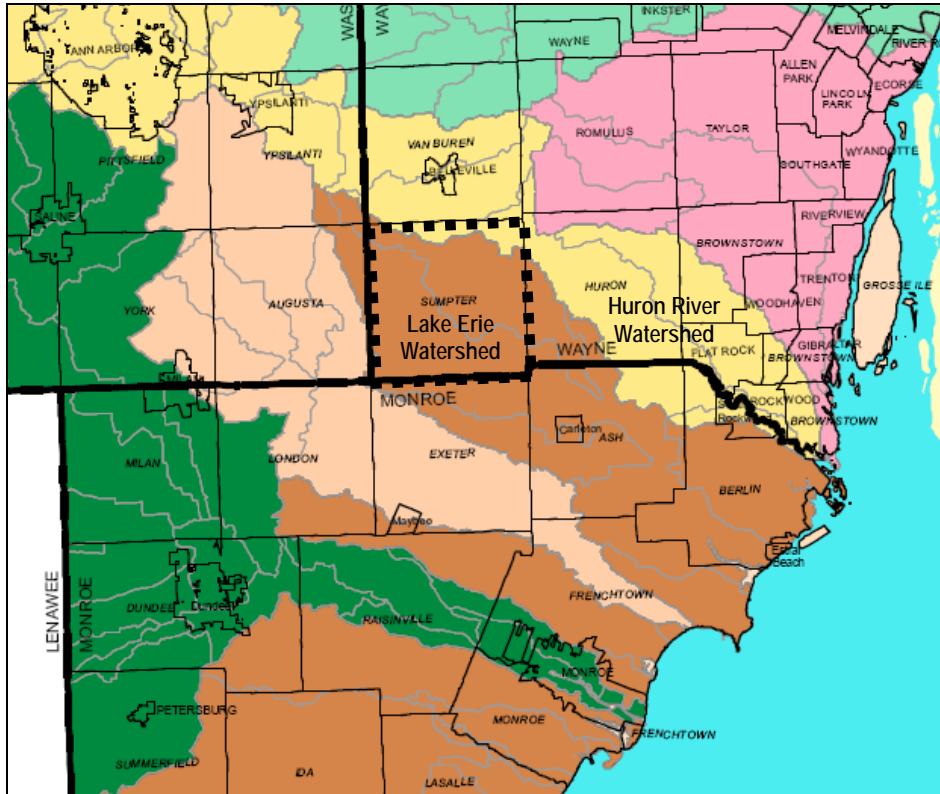
NATURAL FEATURES

Like much of Michigan's southern Lower Peninsula, the Township's landscape was formed as a result of glacial action. The lakeplain prairie landscape which characterizes the Township was formed by the retreating glaciers approximately 14,000 to 13,000 years ago, creating a layer of sand ranging from 5 to 30 feet in depth deposited over glacial clay. The ancient lakes retreated at uneven rates, leaving beach ridges throughout the Township. The most prominent beach ridge crosses the Township diagonally from northeast to southwest. In turn, topography and soils resulted from glacial activity, while plant communities developed in response to soil conditions.

Sumpter Township is characterized by relatively flat terrain. The land surface of the Township varies by only about 88 feet from its lowest point to its highest point. In general, the lowest elevation at 828 feet (NGDV) occurs in the southeastern corner of the Township and elevations rise towards the northwest corner, at 892 feet. Soil types within the Township are predominantly clay with broad channels of sand. The clay soils have low permeability and poor septic field capabilities. The Township is characterized by Wasepi-Gilford-Boyer, Thetford-Granby-Tedrow, Belleville-Selfridge-Tedrow, and Pewamo-Selfridge-Corrinna soil associations.

The Township is primarily located within the Lake Erie watershed with a small northeast portion of the Township draining by ditches into the Huron River (Figure 5). The Township drains into Lake Erie by way of Big Swan Creek Drain from Bradshaw Drain, Desbrow Drain, and the North Branch of Swan Creek Drain.

Figure 5. Watersheds



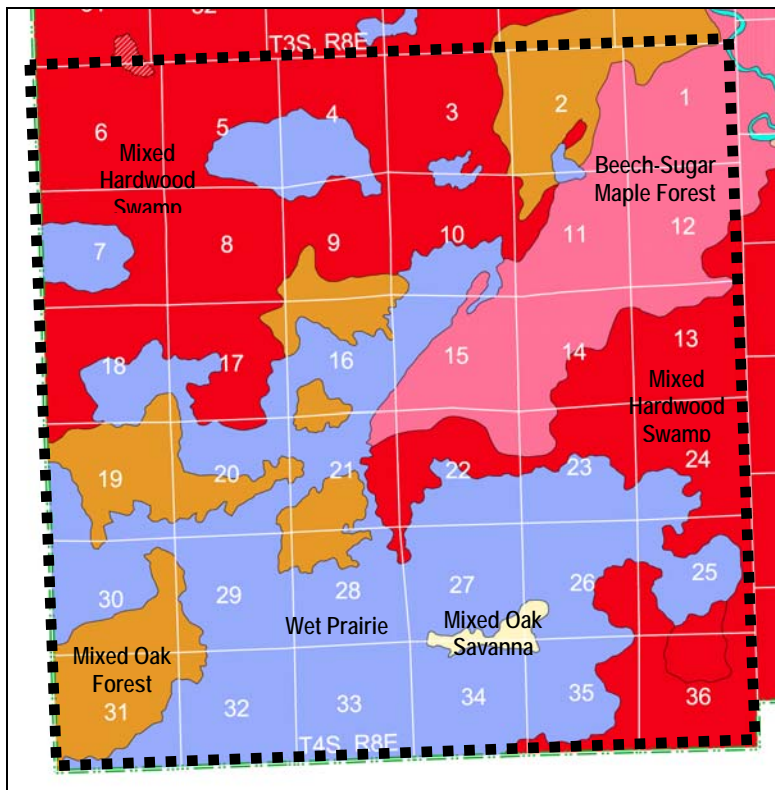
Source: SEMCOG

As shown on Figure 4, wetlands cover a considerable area of Sumpter Township. The most predominant wetland type is deciduous swamp, found primarily in the northeast, central, and southeast sections of the Township. Other types of wetlands found in the township include emergent wetland, wet meadows, and shrub/scrub wetlands.

According to Barnes and Wagner, the plant communities commonly found in the Township include lakeplain prairie, Oak-Savanna, Oak-Hickory, deciduous swamp, and lowland hardwood forests. Defined as tall grass prairies on glacial lake plains, lakeplain prairies result from complex interactions between soils, hydrology, vegetation, and fire. They are a significant open space resource for Sumpter Township.

The Township's woodlands and wetlands are today fragmented by roads and development. Historically, as is depicted in Figure 6, most of Township's land area was covered by lakeplain prairies. The conversion of the prairie areas to agricultural production during the 1800's and the suppression of fire over time substantially reduced this type of plant community in Sumpter Township. Lakeplain prairie remnants can today be found in a few areas of the Township including the northwest corner of Arkona and Martinsville roads, at Lincoln Middle School, along Rawsonville Road, and at the southwest and northeast corners of Arkona and Sherwood roads.

Figure 6. Pre-Settlement Vegetation circa 1800



Source: Michigan Natural Features Inventory

PLANNING INITIATIVES

While change is inevitable and growth in population, household, and housing will occur, Sumpter Township is committed to managing that growth to enhance recreational activities and overall quality of life for Township residents.

Various local and regional planning efforts have taken place in the Township and at the regional level that have relevance to the current plan. They include:

- Sumpter Township Master Land Use Plan (2005)
- Trails and Greenways

Sumpter Township Master Land Use Plan

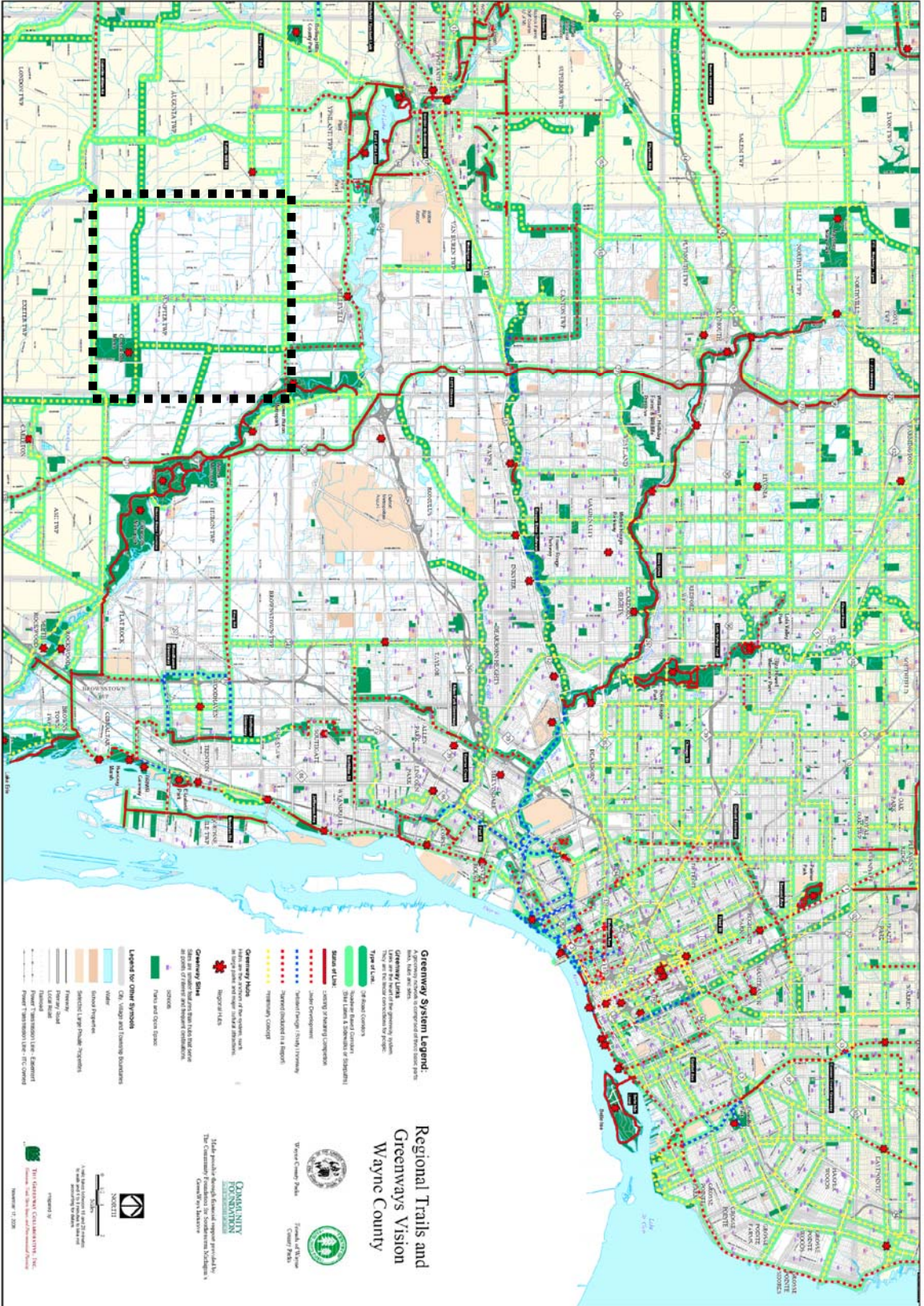
The Township's Master Land Use Plan includes several priorities that relate to parks, trails, open spaces, and recreation facilities and services in the Township. They include the following:

- Work to establish a realistic method by which to maintain the rural character of the Township by:
 1. encouraging and supporting agricultural activity
 2. identifying the important scenic viewsheds in the Township
 3. maintaining hedgerows
 4. designating natural beauty roads
- Preserve natural areas, parcels of significant importance, and open space
- Develop a system of interconnected greenways
- Promote the importance of watersheds, greenways, and other natural systems that can protect and preserve natural resources
- Maintain and enforce design standards for cluster/open space development as identified in the zoning ordinance
- Provide adequate services and programs for all residents

Trails and Greenways

In 2006, the seven-county region of southeast Michigan updated the Southeast Michigan Greenways Vision to reflect the desired non-motorized connections in the region. This initiative was facilitated by the Community Foundation for Southeast Michigan. Counties worked together with local municipalities and community interest groups to develop a long-term vision for a connected system of greenways and trails. The Wayne County Regional Trails and Greenways Vision was produced by holding several workshops to gather input. Figure 7 depicts the vision for Wayne County, identifying the regional framework in which Sumpter Township belongs.

Figure 7. Regional Greenways



Source: Greenways Collaborative, 2006

ADMINISTRATIVE STRUCTURE

The Sumpter Township Parks and Recreation Commission was established in 1984 under Public Act 158 of 1905. The Commission includes citizen members that are appointed by the Township Board of Trustees. The Commission is an advisory body to the Township Board. It advises on the management of parks and recreation.

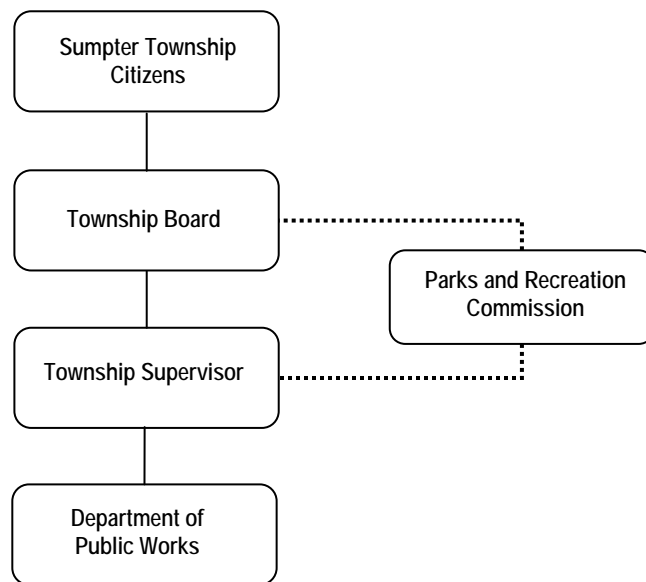
A Township Parks and Recreation Commission Constitution was adopted in 1992 and amended in 1998 detailing the Commission's role. The Parks and Recreation Commission responsibilities are to advise on policies and procedures for parks and recreation, to recommend rules and regulations for the use of Township parks, and to propose, plan, and implement recreational programs and activities that will enrich the community and enhance the quality of life for Township residents. Up to 21 members and 6 alternates may be appointed by the Township Board of Trustees with 3-year terms staggered. In addition, a Township Board representative serves as a liaison. The Commission meets on the third Wednesday of each month.

ADMINISTRATION

The administration of parks and recreation services in Sumpter Township is the responsibility of the Township Board of Trustees, Supervisor's Office, Parks and Recreation Commission, and the Department of Public Works.

Maintenance is the responsibility of the Department of Public Works. The Department of Public Works Director is responsible for all park maintenance which report to the Township Supervisor who, in turn, reports to Township Board of Trustees. Figure 8, below, illustrates the organizational structure of the Sumpter Township as it relates to parks and recreation services.

Figure 8. Sumpter Township Organizational Structure – Parks and Recreation



FUNDING AND BUDGET

Funding for parks and recreation is appropriated from the Township general fund. The parks and recreation budget is approved by the Township Board of Trustees on a yearly basis and is administered by the Commission, Supervisor's Office, and the Clerk's Office. There is no millage support for parks and recreation services in Sumpter Township. Park development projects are mostly supported through grants and donations. Table 7 provides a summary of expenditures for parks and recreation in the last three years.

Table 7. Parks and Recreation Budget Summary

	2007-2008	2008-2009	2009-2010
Community Promotion/Programs	\$ 70,021	\$ 62,969	\$ 600
Recreation Department			
Salaries & Fringe Benefits	\$ 1,595	\$ 200	\$ 200
Operating Supplies	\$ 1,825	\$ 3,750	\$ 1,500
Contracted Services	\$ 1,840	\$ 3,500	\$ 1,500
Transportation and Travel	\$ 2,765	\$ 3,500	\$ 2,750
Insurance and Bonds	\$ 9,229	\$ 9,250	\$ 7,250
Other Expenses	\$ 2,481	\$ 2,500	\$ 2,000
Total Expenditures	\$ 89,756	\$ 85,669	\$ 15,800

VOLUNTEERS AND PARTNERSHIPS

Sumpter Township coordinates some programming efforts with the City of Belleville. Area schools, volunteers, service clubs, community groups, and private businesses also play an active role in supporting parks and recreation in Sumpter Township.

Van Buren Public Schools include athletic fields and playgrounds that are open for Sumpter Township residents. The Van Buren Soccer Organization also provides services in the Township. These organizations use the facilities offered by the Township and the schools. Service clubs and community groups also play a significant role in providing volunteer labor and financial support for park facilities and programs. Active clubs and groups in Sumpter include:

- Civic organizations: Adult and Community Education, Van Buren Public Schools
Lincoln Consolidated School District
- Sports clubs: Van Buren Soccer Organization
- Local clubs: Sumpter Township Senior Center
Belleville Community Band
Belleville Area Chamber of Commerce
- Fraternal organizations: Kiwanis Club
Belleville Rotary Club
- Other: American Cancer Society (Relay for Life)

RECREATION INVENTORY

The residents of the Sumpter Township have a variety of available recreational resources at the local level as well as at the regional, county, and state levels. There are also public schools and privately-owned recreation facilities in the area. This chapter describes these recreational facilities. The information was derived from a variety of sources including previous documents and a field survey of the parks.

PARKS AND RECREATION FACILITIES WITHIN SUMPTER TOWNSHIP

Sumpter Township currently operates three parks totaling over 100 acres of land. In addition, two Van Buren Public School sites, Crosswind Marsh County Park, and Lower Huron Metropark are located or partially located within the Township along with some privately-owned recreation facilities. Figure 9 shows these properties and the following outlines the facilities they include.

Graham Park

Located in the in the northwest corner of Sumpter and Wear roads, Graham Park includes 9.4 acres with a park entry from each road. The park is used for the Sumpter Family Fun Day celebration in July. The east area from Sumpter Road includes:

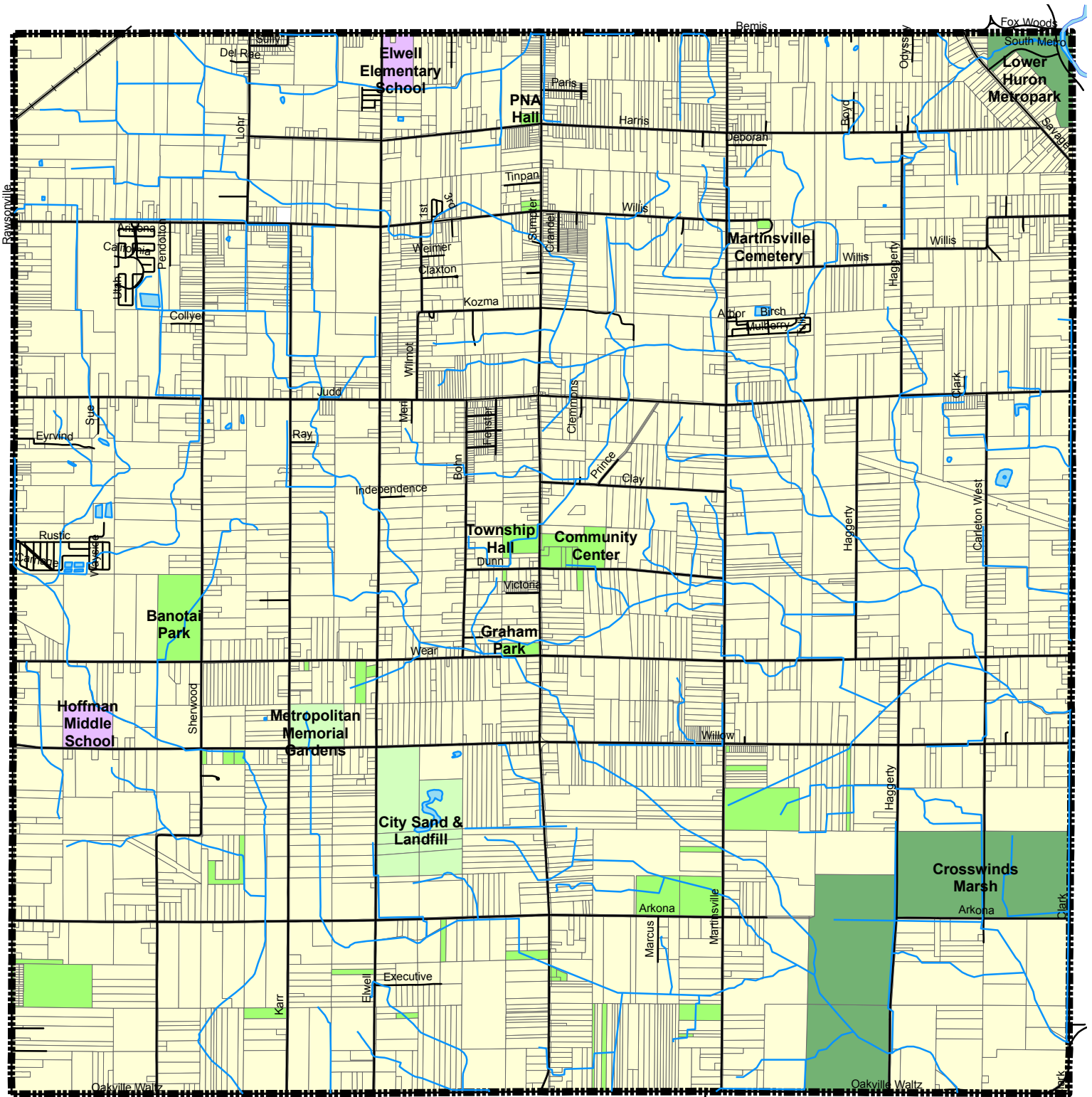
- Gravel surface parking area
- Ball field
- Picnic pavilion with tables and grills
- Small building with flag pole
- Park sign and memorial
- Portable restroom



The west area from Wear Road includes:

- Gravel surface parking area
- Portable toilet
- Basketball court
- Horseshoe pits
- 3 picnic pavilions with tables and grills
- Playground



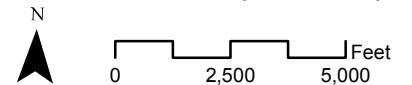


Legend

- Township Parks & Facilities
- Wayne County Park & HCMA Metropark
- Public Schools
- Private Open Spaces & Recreation Areas

PARKS, RECREATION & COMMUNITY FACILITIES

Sumpter Township
Wayne County



7-15-2010

Banotai Park

With 79.4 acres, Banotai Park is the largest Township park. It is located at the northwest corner of Sherwood and Wear roads. This community park contains the following recreation facilities:

- Gravel surface drive and parking area
- Restroom building
- Beach on Sherwood Lake
- Fishing Pier
- 2 picnic pavilions
- Picnic tables and grills
- 2 drinking fountains
- Play structure and equipment
- Nature area with trails



Community Center

Located on Sumpter Road, northeast of Dunn road, the site contains 8.81 acres of land. This former school houses a community center with a kitchen and indoor gymnasium, a senior wing, and the Sumpter Police Department. A number of recreation programs take place at this site such as dance, aerobic classes, basketball, volleyball, bingo, and other classes. The site also includes an arena used for rodeos and fairs as well as an area for camping. The property includes the following facilities:

- Parking area
- Community center with kitchen, indoor gymnasium, game room, and meeting rooms
- Outdoor arena
- Large picnic pavilion
- Restroom building
- Open field
- Fenced-in tot lot



Sumpter Township Hall

Located on Sumpter Road across from the Community Center at the northwest corner of Sumpter and Dunn Roads, the property contains 22.35 acres of land with outdoor grounds used for fairs and festivals.

Martinsville Cemetery

Located on Willis Court, it contains 2.34 acres of land owned by Sumpter Township.

Polish National Allegiance Hall

Located on at the northwest corner of Harris and Sumpter roads, this 4.2-acre property was donated to the Township in 1994 and is used for public banquet facilities. The site includes a mature forested area.

Other Township Properties

Sumpter Township owns other properties in the Township which are currently vacant. They are shown on Figure 9.

Bessie Hoffman Elementary School

Located on Willow Road in the west part of the Township, it includes about 44.8 acres with:

- Ball field
- 3 soccer fields
- Basketball court
- Playground equipment
- Indoor gymnasium

Elwell Elementary School

Located on Elwell Road in the north part of the Township, this school site includes 45 acres with:

- Ball field
- 8 soccer fields
- Paved surface
- Playground equipment
- Indoor gymnasium

Keystone Academy Charter School

Located on Bemis Road in the north part of the Township, this private school includes:

- Soccer field
- Playground equipment

City Sand and Landfill

Located at the southeast corner of Willow and Elwell roads, this private 230-acre property includes an area for model airplanes, a sportsman's club with gun range, and a natural area for wildlife and scenic viewing.

Metropolitan Memorial Gardens

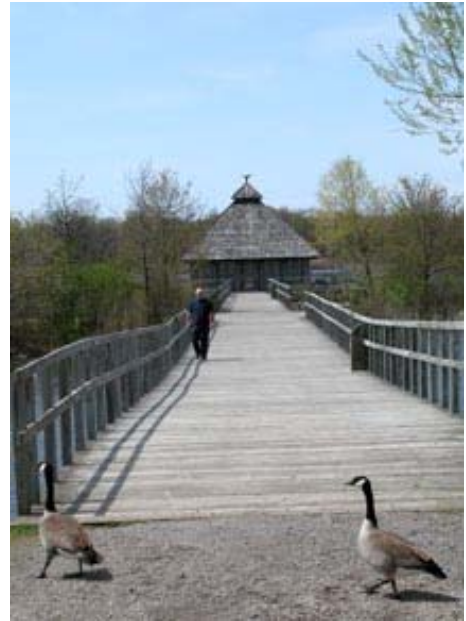
Located at the northwest corner of Karr and Willow roads, this privately-owned cemetery includes 49.53 acres.

Sumpter Roller Rink

Located on Sumpter Road south of Willis Road, this commercial facility includes an indoor roller rink and a small video arcade on a 1.34-acre property.

Crosswinds Marsh

Crosswinds Marsh is a Wayne County Park located in the southeast corner of Sumpter Township. It includes 1,123 acres of wetland preserve offering hiking, horseback riding, cross-country skiing, picnicking, canoeing, fishing, and a variety of environmental education programs.



Crosswinds Marsh

Lower Huron Metropark

Lower Huron Metropark is a regional Huron-Clinton Metropolitan Authority park partially located within the Township (86 acres). It provides a wide range of recreation opportunities including picnicking, play, hiking, canoeing, fishing, golf, court games, cross-country skiing, ice-skating, and an aquatic center.



Lower Huron Metropark

RECREATION PROGRAMS AND SERVICES

Sumpter Township offers some recreation opportunities and special events to Township residents and non-residents. Some of the program offerings are listed below.

Special Events:

- Mardi-Gras Dinner Dance
- Children's Easter Party
- Sumpter Country Fest
- Sumpter Family Fun Day
- Don Rochon Memorial Car Show
- Turkey Shoot
- Children's Christmas Party

Seniors:

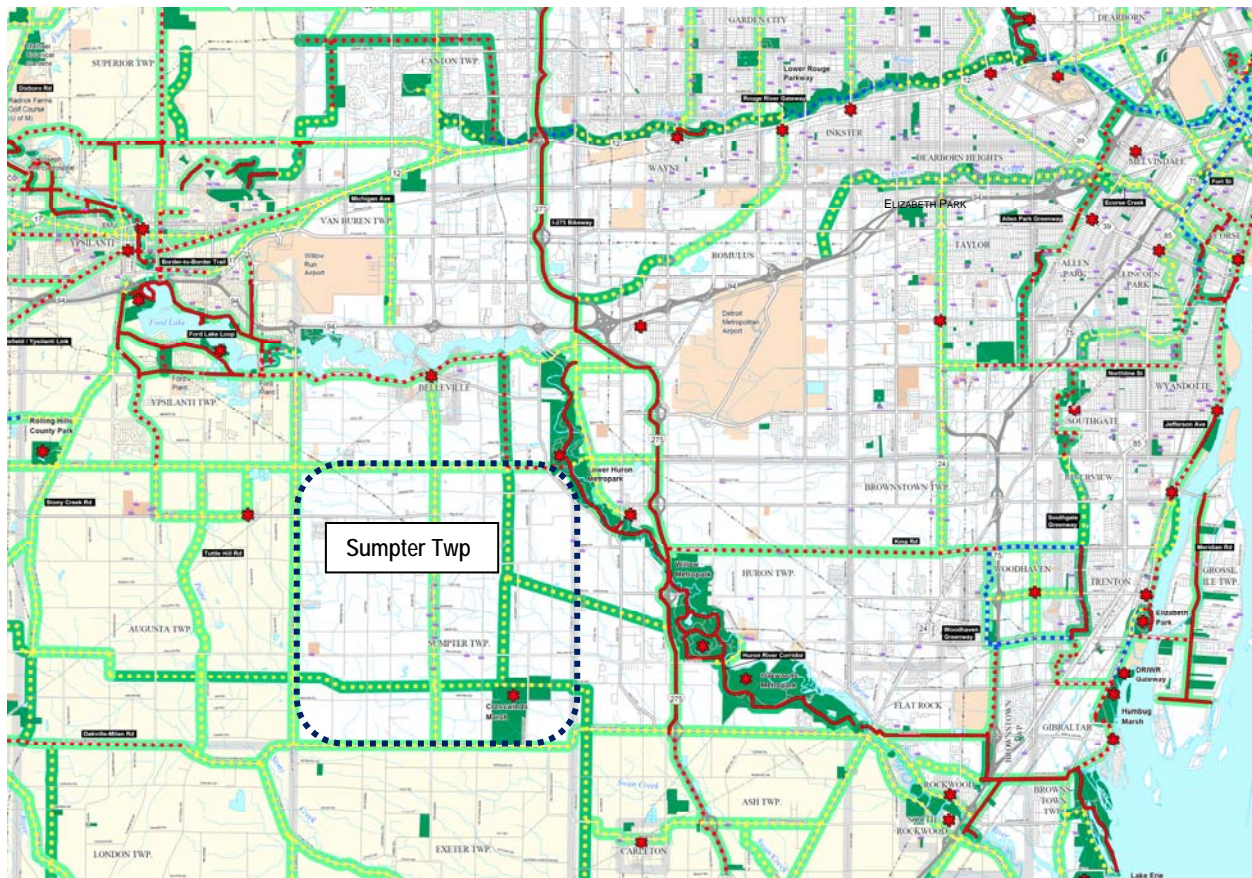
- Aerobics
- Line Dancing
- Ceramics
- Bingo
- Potluck Craft Fun
- Exercise equipment
- Bible study
- Quilting
- Birthday bingo
- Parties
- Trips
- Health programs such as Foot Dr. Blood Pressure, Wellness Day, Walking Club, etc.

As mentioned previously, there are also other organizations providing recreation programs in Sumpter Township. They include the Van Buren Soccer Organization and the Van Buren Public Schools Adult and Community Education.

PARKS AND RECREATION FACILITIES AROUND SUMPTER TOWNSHIP

A variety of major regional recreational facilities and opportunities are also available nearby to Township residents. There are over 2,000 acres of parkland owned by Wayne County Parks, over 6,700 acres of state or federally owned land and recreational facilities, and an additional 6,150 acres of parkland from the Huron-Clinton Metropolitan Authority (HCMA). These facilities are considered regional recreational facilities. They are large facilities that provide opportunities such as camping, swimming, boating, fishing, hunting, hiking, and golfing which are typically beyond the ability of a local municipality to provide. Figure 10 depicts the location of some of the regional parks around Sumpter Township while Table 8 lists the recreational activities they offer.

Figure 10. Regional Parks around the Sumpter Township



Source: Wayne County Greenways Vision, 2006

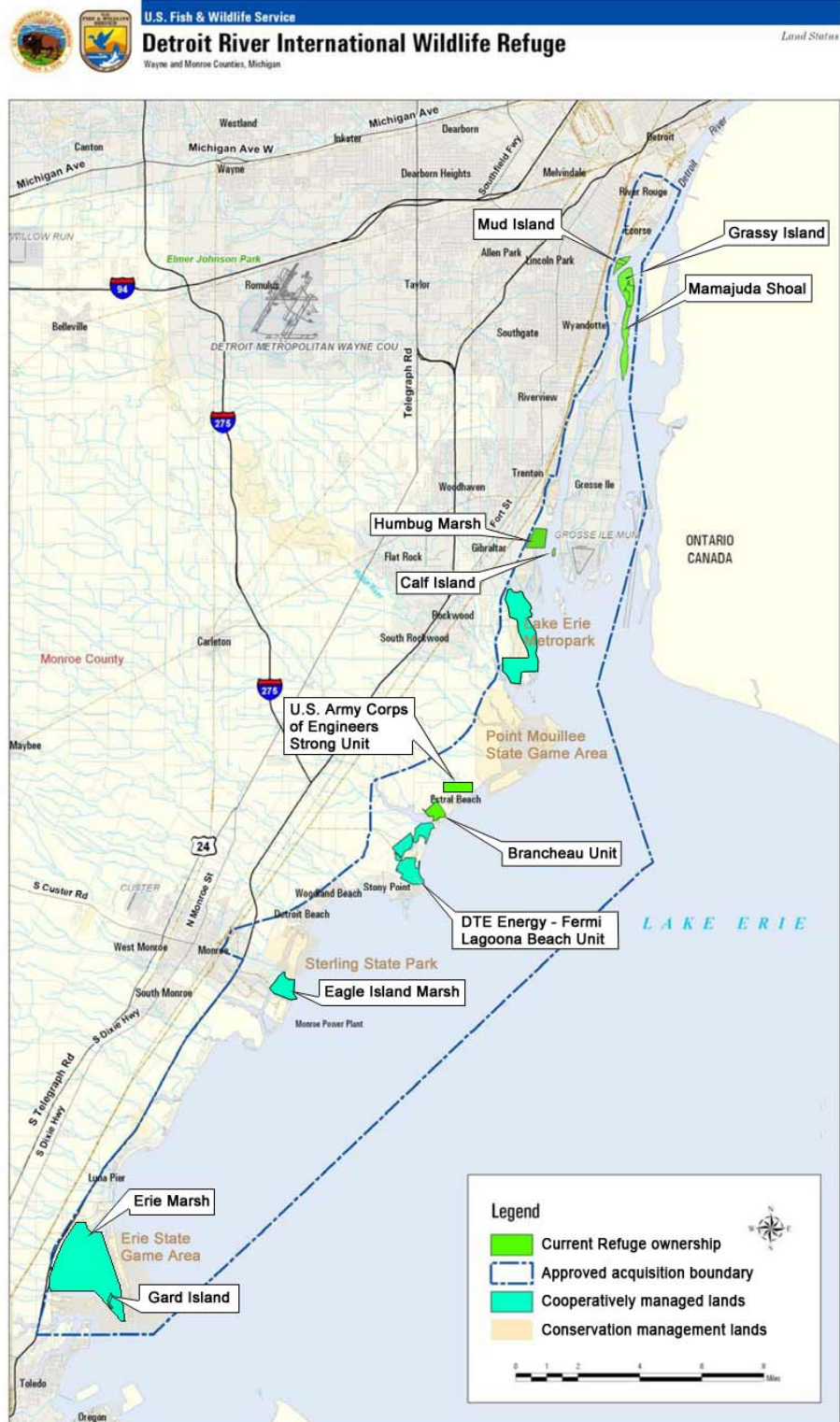
Table 8. Regional Recreation Facilities

		Wayne County Parks			HCMA Parks				State & Federal Land			
		Crosswinds Marsh 1,123 Ac.	Elizabeth Park 162 Ac.	Lower Rouge 1,183 Ac.	Oakwoods Metropark 1,756 Ac.	Lake Erie Metropark 1,607 Ac.	Lower Huron Metropark 1,258 Ac.	Willow Metropark 1,531 Ac.	Erie State Game Area 1,519 Ac	Pointe Mouillee State Game Area – 3,466 Ac.	Sterling State Park 1,300 Ac.	Detroit River International Wildlife Refuge – 465 Ac.
Passive	Picnicking	●	●	●	●	●	●	●			●	
	Play Areas			●		●	●	●			●	
	Restrooms		●	●	●	●	●	●		●	●	●
Trails	Paved Trail		●		●	●	●	●			●	
	Nature Trail				●	●	●				●	
	Hiking Trail	●	●		●	●	●	●	●		●	
	Equestrian Trail	●			●							
Water Activities	Swimming Beach										●	
	Swimming Pool						●	●				
	Spray Park						●					
	Wave Pool					●						
	Boating					●		●			●	
	Boat Rental							●				
	Canoe/Kayak Rental					●						
	Boat Launch		●			●			●	●	●	
Fishing	●	●		●	●	●	●	●	●	●		
Winter Activities	Ice Skating		●				●	●				
	Tobogganing							●				
	Sledding					●		●				
	Cross-country Skiing	●	●		●	●	●	●			●	
	Ski Rental							●				
Interpretive Facilities	Nature Center				●	●						
	Wildlife Viewing	●			●	●			●	●	●	●
	Historic Interpretation		●									
Court & Turf Games	Ball Fields		●	●		●	●	●				
	Court Games					●	●	●				
	Skate Park							●				
Misc.	Disk Golf							●				
	Driving Range					●		●				
	Golf Course					●	●	●				
	Marina		●			●						
	Hunting								●	●		
	Camping										●	
	Group Camping						●					

Detroit River International Wildlife Refuge

One of the largest regional recreation facilities near Sumpter Township is the Detroit River International Wildlife Refuge, which is located along the Detroit River south of Wyandotte. It is along the major flyway for many migratory birds and a great place to see waterfowl. The refuge includes 465 acres of islands, coastal wetlands, marshes, shoals, and waterfront lands along both the Detroit River and the Lake Erie shorelines. It contains Humbug Marsh, Grassy Island, and Mud Island. The refuge manages land for the U.S. Army Corps of Engineers and for Detroit Edison and includes, within its boundaries, several existing parks and state game areas.

Figure 11. Detroit River International Wildlife Refuge



Source: U.S. Fish and Wildlife Service

State Recreation Areas

There are several state-owned facilities located within a short drive of Sumpter Township along Lake Erie including Sterling State Park, Pointe Mouillee State Game Area, and Erie State Game Area. The state-owned facilities provide opportunities such as hunting, fishing, camping, swimming, boating, and hiking.

Huron-Clinton Metroparks

The Huron-Clinton Metropolitan Authority operates more than a dozen parks in southeast Michigan. The parks closest to Sumpter Township include Lower Huron, Willow, and Oakwoods Metroparks along the Huron River, and Lake Erie Metropark on Lake Erie's shoreline. They provide a wide range of recreation opportunities including picnicking, play, hiking, swimming, boating, fishing, golf, court games, cross-country skiing, and ice-skating, tobogganing, and sledding.

Wayne County Parks

Aside from Crosswinds Marsh, Wayne County Parks provide other large parkland areas providing opportunities for active sports, picnicking, exercise, play, and nature viewing. The Lower Rouge Parkway and Elizabeth Park are the closest County Parks to Sumpter Township. The Lower Rouge Parkway is a greenway along the Rouge River including three park areas: Colonial, Inkster, and Venoy parks, which include active sports fields, picnic areas, playground, and restrooms. Historic Elizabeth Park consists of 162 acres of land along the Detroit River featuring a Victorian shelter and a riverwalk. Activities include softball, fishing, cycling, in-line skating, hiking, cross-country skiing, and ice-skating.



Elizabeth Park

COMPARISON TO RECREATION STANDARDS

The National Recreation and Park Association (NRPA) has classified parks and recommended an appropriate amount of parkland for a given population size. Although these guidelines are useful in pointing out deficiencies, a community's recreation system should be tailored to meet the needs of the community and not based on national guidelines.

According to the NRPA, parks and open spaces are categorized as mini-parks, neighborhood parks, community parks, regional parks, and preserves. The mini, neighborhood, and community parks are the *close-to-home* parks, designed to satisfy the recreational needs of local communities within a service radius of up to two miles. All Township Parks are considered *close-to-home* parks. According to NRPA standards, the amount of *close-to-home* parkland recommended is 6.25 to 10.5 acres for every 1,000 residents.

Regional parks are parks that serve a broader area than community parks and focus on meeting the recreation needs of the region as well as preserving unique landscapes and open spaces. For Sumpter Township residents, this would include the Wayne County Parks, the HCMA metroparks, and the state- and federally-owned parks and recreation areas described in the preceding pages. The NRPA standard for regional parks is 15 to 20 acres of parkland per 1,000 people.

The NRPA also recognizes other types of parks such as schoolyards and private recreation facilities, which can contribute to the local parks and recreation system. This would include the public schools and private recreation facilities discussed earlier. These facilities, however, offer some limitations to regular public access for Sumpter Township residents.

Table 9 compares the NRPA suggested standard with existing Township parks based on 2009 population and projected population for 2035. As evident from this comparison, Sumpter Township parks meet the acreage requirements for close-to-home parkland in 2009 and 2035. In addition, the residents of the Sumpter Township are well-served by the regional park facilities provided by the county, HCMA, the state and federal governments that are located in and around the Township.

Table 9. Comparison to Suggested Parkland Acreage Standards

Type of Park	NRPA standard Per 1000 pop.	Required Based on 2009 population 10,825	Required Based on 2035 population 12,126	Existing
<i>Close to Home</i> Parkland	6.25 - 10.5 Ac.	68 - 114 Ac.	76 - 127 Ac.	102 Ac.
Regional Parks	15 - 20 Ac.	162 - 217 Ac.	182 - 243 Ac.	15,247 Ac.
Schools (within Township)	-	-		90 Ac.

ACCESSIBILITY ASSESSMENT AND STATUS OF GRANT ASSISTED PROJECTS

A critical component in planning for recreation facilities is providing barrier-free access to accommodate the needs of all people, including disabled individuals. The ranking system suggested by the Michigan Department of Natural Resources Guidelines (2009) to determine accessibility was used to evaluate the Township parks. The ranking system ranges from 1 to 5:

1. None of the facilities meet accessibility guidelines
2. Some of the facilities/park areas meet accessibility guidelines
3. Most of the facilities/park areas meet accessibility guidelines
4. The entire park meets accessibility guidelines
5. The entire park was developed/renovated using the principles of universal design

Table 10 presents the result of this evaluation. The specific elements that were evaluated include parking, paths of travel from parking to activity areas, activity areas themselves, support facilities such as restrooms, and surfacing.

Table 10. Accessibility Assessment

Park	Rank	Comments
Graham Park	2	There are no accessible routes to the park's activity areas
Bonatai Park	2	There are no accessible routes to most activity areas
Community Center	2	There are accessible routes to the building but not to outdoor activity areas

Future park projects will be designed to comply with or exceed accessibility guidelines of the American with Disabilities Act (ADA). It is the intent of the Sumpter Township to retrofit these facilities with park upgrades and renovation projects.

Sumpter Township has received several MDNRE grants for parkland acquisition and development. Table 11 presents a description of these grants as well as their current use and condition.

Table 11. MDNR Grant Assisted Projects

Grant Number	Application Year & Source	Description	Grant Amount	Current Use/condition
#26-01004 MRNTF	1971	Acquisition of Banotai Park (Formerly Sherwood Park)	\$32,740	-
#90-039 BF	1990	Phase 1 roof replacement - gymnasium at the Community Center building	\$35,000	Good condition
# 93-195 BF	1993	Phase 2 roof replacement - Senior Wing at the Community Center building	\$72,000	Good condition
#00-212 CM	2000	Window replacements at Community Center building	\$70,000	Good condition

LWCF: Land and Water Conservation Fund

BF: Recreation Bond Fund

CM: Clean Michigan Fund

NEEDS ASSESSMENT & PUBLIC PARTICIPATION

An essential task in the recreation planning process is to determine the needs of the community as a basis for an action plan to improve the parks system. Needs provide the rationale for the formulation of goals and objectives as well as identify areas for capital improvements. To assess needs, consideration was given to current recreation trends and a public meeting was conducted. The opinions focused on identifying priorities for park development in the future.

NATIONAL RECREATION TRENDS

Recreation trends on a national level and in Michigan provide insight into activities that show the greatest growth in popularity and may affect the future direction of parks and recreation. The National Sporting Goods Association (NSGA) regularly conducts national surveys to measure participation in physical activities and track changes from previous years. Table 12 lists the top seven activities persons seven years and older participated in at least once in 2008.

Table 12. National Sports Participation, 2008

Activity	Participation
Exercise walking	96.6 million
Swimming	63.5 million
Exercising with equipment	63 million
Bowling	49.5 million
Camping	49.4 million
Bicycle riding	44.7 million
Fishing	42.2 million

Source: National Sporting Goods Association

Between 1998 and 2008, the top fastest growing activities include:

- Exercise walking (from 77.6 to 96.6 million)
- Exercise with Equipment (from 46.1 to 63 million)
- Running/jogging (from 22.5 to 35.9 million)
- Working out at a club (from 26.5 to 39.3 million)
- Hiking (from 27.2 to 38 million)

These national trends are consistent with trends in Michigan. According to a survey of Michigan residents conducted in 2007 as part of the 2008-2012 Michigan Comprehensive Outdoor Recreation Plan, more than half the respondents participated in one or more of the following: walking outdoors, relaxing outdoors, driving for pleasure, swimming in a lake, river, or pond, sightseeing, picnicking, bicycling on a road or sidewalk, and fishing.

The National Recreation and Park Association (NRPA) and the American Academy for Park and Recreation Administration have published a list of future trends compiled from different sources that will influence the direction of recreation planning and programming. These trends include increases in:

- Environmentally sensitive lifestyles

-
- Natural area management and water quality protection
 - Concerns for personal and family security
 - Importance for wellness activities
 - Desire to preserve and maintain cultural heritage
 - Public costs, in the provision of leisure services through the public sector, private sector, or partnerships
 - Recognition of the economic value of parks, open space, and green infrastructure

Monitoring parks and recreation trends is important in determining how parks and recreation services should evolve. Conclusions regarding the implication of the trends noted combined with the demographic and physical characteristics of Sumpter Township are summarized below:

- Recreation facilities and programs should respond to the expected increase of seniors.
- There is and will continue to be a need for more linear parks and corridors to accommodate bicycle and pedestrian pathways for recreation and non-motorized transportation.
- With the increased popularity of exercise walking and fitness-related activities, there will continue to be an increased importance on recreation contributing to walkable, livable, and sustainable communities.
- The continued collaboration and partnerships between public, private, and non-profit agencies as well as with adjacent local municipalities for the provision of parks and recreation programs and facilities will be critical to the future success of Sumpter Township Parks and Recreation.

PRIORITIES AND INPUT

The Parks and Recreation Commission regularly identifies priorities for development and upgrade of the Township parks. Current priorities include:

- Installation of two new pavilions (24' X 30') with concrete slab and footing at Bonatai Park (Estimated cost: \$12,000)
- Repair and extension of fishing pier at Bonatai Park (Estimated cost: \$3,000)
- Establishment of a gravel parking lot and accessible route to fishing pier at Bonatai Park (Estimated cost: \$8,000)
- Completion of a road around the pond at Bonatai Park using an existing road bed (Estimated cost: \$8,000)
- Resurfacing of basketball court at Graham Park (Estimated cost: \$6,000)
- Repair of lighting at Graham Park (Estimated cost: \$3,000)
- Provision of six portable restrooms (2 for Bonatai Park and 4 for Graham park) including attachments to cement slabs, rat-wall footings and wooden enclosures with shingled gable roofs. (Estimated cost: \$4,500)
- Installation of four drinking Fountains (two for each park) with water taps (Estimated cost: \$17,773)
- Installation of six flag poles (2-30' & 4-25') encased in concrete with lock boxes (Estimated cost: \$4,232.98)

The Commission also keeps a “wish” list for future improvements of the parks (Table 13).

Table 13. Potential Park Improvements

Bonatai Park
• Completion of a road around the lake
• Expansion of the beach to the west
• Addition of equestrian and nature trails on the north portion of the park
• Installation of new picnic pavilions and areas around the lake
• Addition of a playground area at the southeast end of the park
• Installation of volleyball court or horseshoe pits by pavilions
• Establishment of a pathway around the lake connecting the different activity areas with distance markers
• Addition of a restroom building south of the lake
Graham Park
• Expansion of the recreation building with additional storage room and garage
• Establishment of a pathway around the park with distance markers
Community Center
• Upgrade of bleachers at the arena
• Upgrade of restroom building with new fixtures and screening of entrances
• Enclosure of picnic pavilion on the north side

Residents were also invited to attend a public hearing early in the Master Plan's development. A public notice was published in the local newspaper. The hearing took place at a Township Board meeting which was held on July 13, 2010 at Township Hall and included 24 participants.

Following an introductory presentation, which included a description of the master planning process and the information gathered to date, attendees were asked to provide input and details related to park development, program enhancement, and any other issues. The input received is listed in Table 14.

Table 14. Public Hearing Input

Statement
• Install toilets that flush with septic tank/field
• Provide more parking at Bonatai Park
• Install a dry hydrant hooked to the pond at Bonatai Park
• Provide equestrian trails in the wooded area of Bonatai Park (volunteers can help)
• Develop hiking trails, some are existing
• Provide electric power at both park pavilions
• Concerns regarding future safety in the parks – may need a life guard, emergency phone, more patrolling/enforcement
• Concerns regarding future need for increased staff and maintenance with park development
• Install solar lights by the beach area or parking lot at Bonatai Park
• Set up a separate parks and recreation fund for park facility maintenance
• Provide playground equipment for younger kids (0 to 5 years old)
• Install a small paved area (100 X 100') for remote control car racing
• Add safety surface under play structure at Bonatai Park

PUBLIC REVIEW AND PUBLIC HEARING

After the Parks and Recreation Commission considered the input received, reviewed the recreation trends, needs, and other background information, they established the master plan goals, objectives, and an action program for implementation.

A draft plan was then prepared which was made available for public review for one month beginning on _____, 2010. Copies were placed at the Community Center and Township Hall. The plan's availability for public review was posted in the local newspaper and on the Township's website (Appendix A). Following the public review period, the Parks and Recreation Commission considered the comments received, made adjustments to the Master Plan, and recommended adoption of the Plan by the Township Board at their regular meeting of _____, 2010_(Appendix B). The public input into the plan culminated in an advertised public hearing held at the Township Board meeting of _____, 2010 (Appendix A & C). After the hearing, the Council adopted the plan (Appendix D).

Dates to be inserted

The overall parks and recreation issues considered by the Parks and Recreation Commission focused on

- Existing park maintenance and upgrade
- Park facility development
- Pathway development
- Parkland acquisition
- Recreation services, communication, and partnerships
- Administration and funding

These issues served to formulate the goals and objectives of Sumpter Township Parks and Recreation Master Plan.

GOALS AND OBJECTIVES

The Sumpter Township Parks and Recreation Commission has formulated the following goals and objectives for the next five-year planning period. The goals and objectives are broad enough to encompass the needs expressed from the public, Township officials, and staff, and address the observed deficiencies in the recreation resources of the area. They also consider demographics, current growth and forecasted development, the area's physical resources, and recreation trends.

I. *Maintain existing parks*

There is a need to ensure that existing park facilities are maintained and upgraded. Facilities that are safe, functional, and well-maintained are essential to Sumpter Township's parks and recreation system.

- Upgrade aging existing facilities
- Refurbish roadway, parking, and court game pavement surfaces
- Maintain park pavilions and buildings with roof repair, painting, etc.
- Maintain safety surface under play equipment
- Remove barriers to accessibility and comply with ADA standards
- Install/replace park furnishings such as benches, trash receptacles, picnic tables, grills, drinking fountains, lights, and signs
- Improve the parks' aesthetics with landscaping
- Other general park maintenance and safety features

II. *Develop new park facilities*

There is also a desire to continue developing new park facilities that respond to the changing needs of community residents such as developing new park facilities at Bonatai and Graham parks as well as at future potential park locations in the Township.

- Improve parks with additional park support facilities and amenities such as restrooms, access drive and parking areas
- Develop new recreational facilities at existing or future parks such as playground equipment, picnic pavilions, pathways, and other recreation opportunities

III. *Establish a continuous Township-wide pathway system*

The establishment of greenways and non-motorized pathways to connect the parks and form a continuous park system tying community facilities, schools, neighborhoods, and parks is a priority for the community. This Township-wide system should also be tied to the regional greenway system planned for the area.

- Select road corridors that would be feasible for the development of non-motorized pathways
- Work with county agencies, utility companies, and neighboring communities on joint funding opportunities for greenways and pathway development

IV. *Future parkland acquisition/dedication*

Sumpter Township currently owns a number of vacant properties and could continue to acquire properties for parkland development. Future parkland acquisition and dedication should focus on linking parks and community facilities as well as to provide community open space in new residential developments. Coordination with the Township Board and the Planning Commission will be necessary to carry on this effort.

- Continue to evaluate and acquire land to establish new Township parks particularly in areas of the Township that are underserved

V. *Recreation Services, Communication, and partnerships*

Park and recreation services in Sumpter Township are operated by the volunteer Parks and Recreation Commission. Coordination with the region's recreation providers, schools, civic groups, and business organizations is important to maximize the Township's recreation potential. The Parks and Recreation Commission should continue to play a role in the coordination of such services by focusing on increasing public awareness and support for park development projects and meeting community recreational needs for both parks and programs.

- Partner with schools, neighboring communities, and other recreation providers to expand and coordinate recreation programs to avoid duplication of services and reduce costs

VI. *Administration and funding*

A quality park and recreation system is dependent on the prudent use of available funds. Park improvements and operations have been funded through grants and donations. Pursuing grants and fundraising where possible must continue to be a priority to provide capital improvement projects and parkland acquisition.

- Continue to pursue grants for park facility development
- Continue to conduct fund raising events to support community events and recreation activities
- Consider setting aside a separate fund for park maintenance

ACTION PROGRAM

The action program details the manner in which the goals and objectives will be met. It includes a list of specific projects, as well as suggested improvement projects, timing, and strategies for implementation.

ACTION PLAN

The following outlines a list of specific projects and actions which are recommended for accomplishment during the planning period. Concept plans showing the park improvements are also included to illustrate the proposed actions.

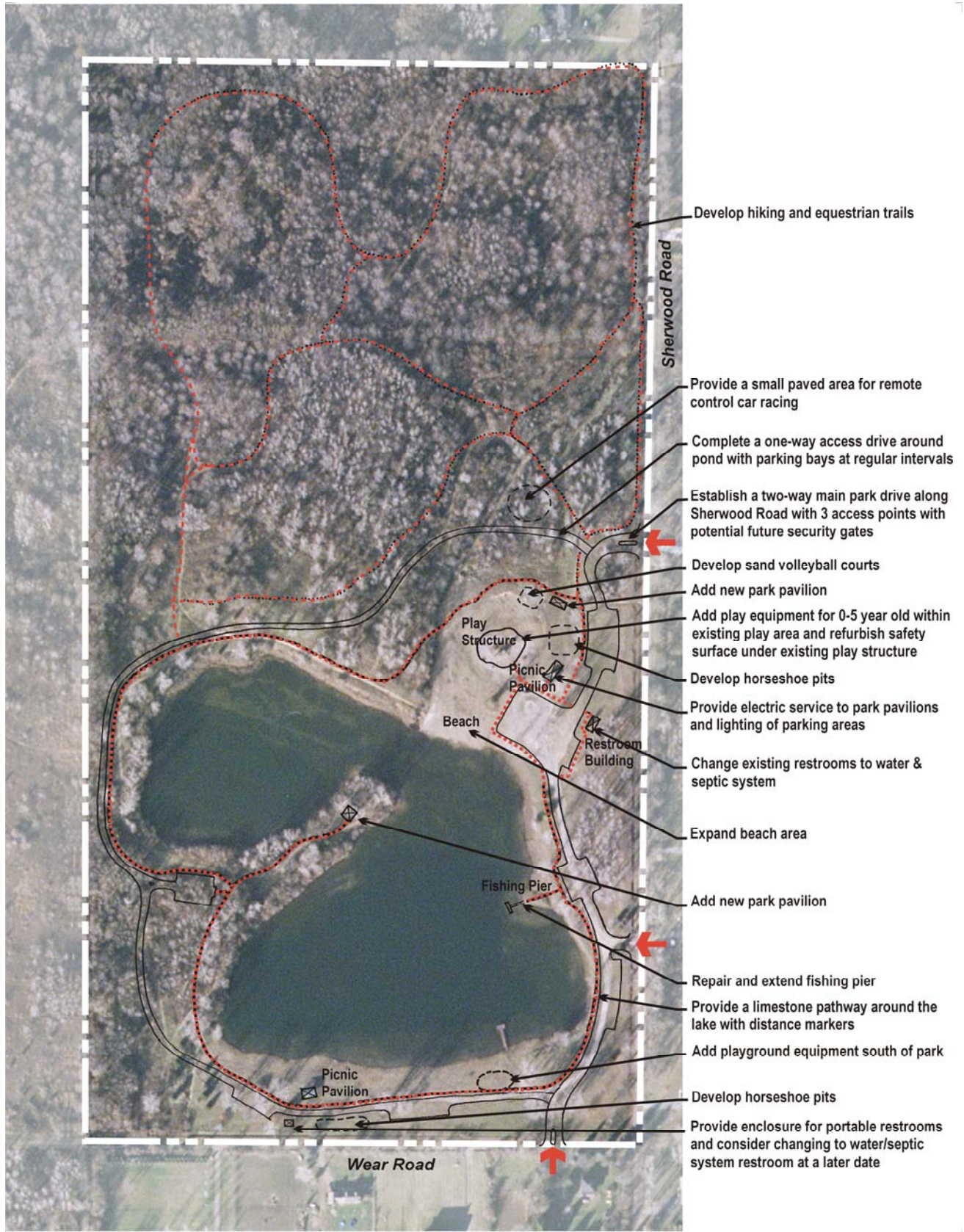
1. *Maintain and upgrade existing park facilities and landscaping (All Township parks)*

This objective includes replacing old equipment which are in a state of disrepair, are outdated, or are dangerous. It also includes improving the appearance of the Township Parks through appropriate landscaping and maintenance. All upgrades must be in compliance with the Americans with Disabilities Act and efforts should be taken to remove all existing barriers to universal access. Proposed actions include:

- Upkeep safety surfaces under play structures to regulated depth and fall zone
- Refurbish roadway, parking, and court game pavement surfaces
- Add park furnishings such as benches, picnic tables, grills, trash receptacles, drinking fountains, lights, and signs
- Provide electric service to park pavilions and lighting in parking areas
- Maintain restroom, buildings, and park pavilions with roof repair, painting, and other repairs as needed
- Add attractive landscaping by park signs, entries, and other locations

Justification: These items were identified at the public meetings, by the Parks and Recreation Commission, and by observation of the parks.

Figure 12. Bonatai Park Plan



2. *Improve Bonatai Park*

Because of its prime location and size, Bonatai Park is a high priority for future park improvements. Proposed improvements include:

- Repair and extend fishing pier
- Add two new picnic pavilions
- Develop/complete an access drive around the pond
- Add a parking lot on the south end of the park
- Add play equipment for 0 to 5-year old within the existing play structure area and add a playground area on the south end of the park
- Expand beach area to the west
- Install sand volleyball courts and/or horseshoe pits by park pavilions
- Provide a small 100' X 100' paved area for remote control car racing
- Add equestrian and hiking trails on the north portion of the park
- Develop a limestone pathway around the lake with distance markers which would meet ADA standards and connect all activity areas
- Add restroom building with changing area in the future
- Consider adding a means to secure the park as development continues such as seasonal security gates

Justification: These items were identified at the public meetings, by the Parks and Recreation Commission, by observation of the park, and respond to current environmental and social recreation trends.

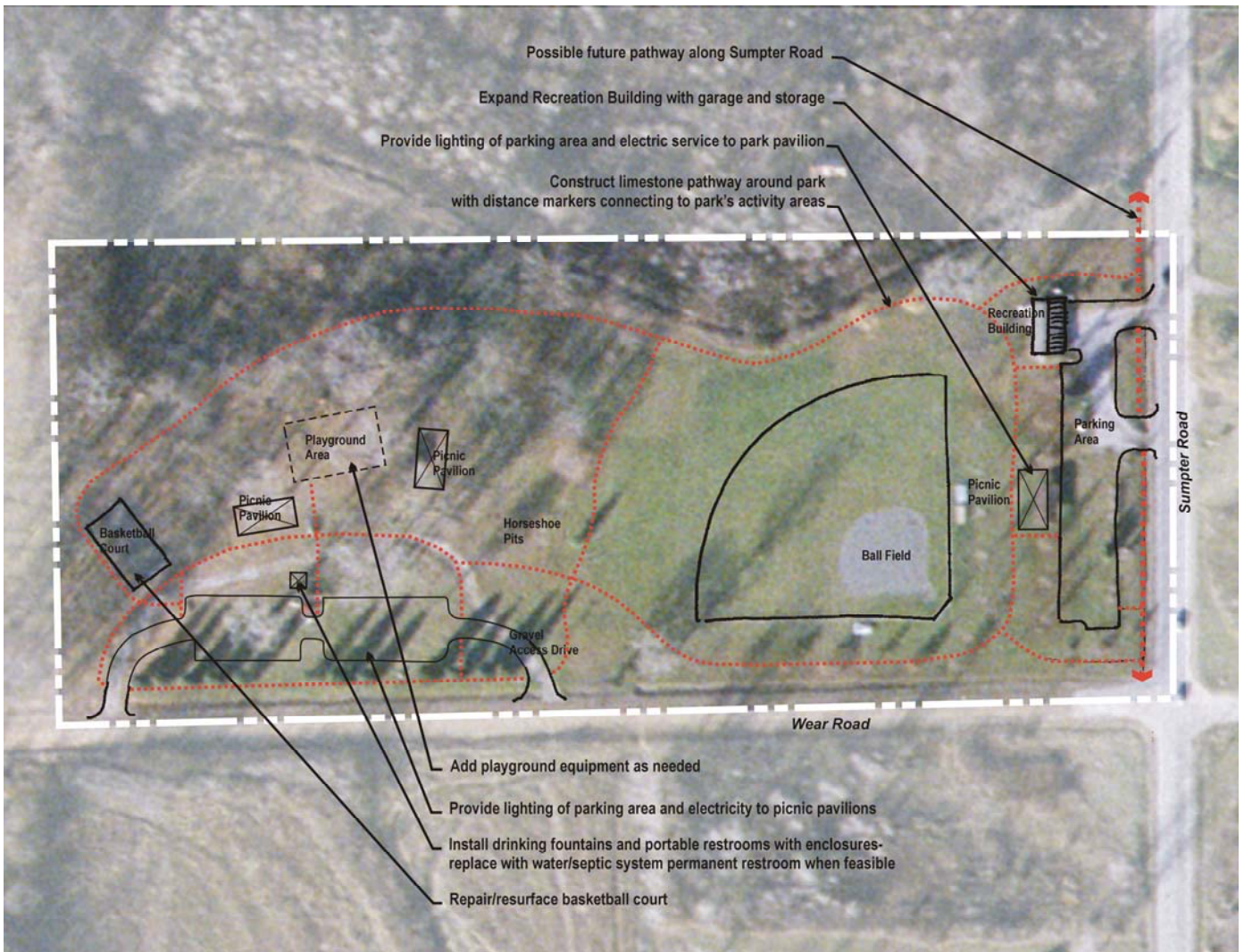
3. *Improve Graham Park*

Proposed improvements include

- Repair/resurface basketball court
- Continue to add playground equipment as needed
- Develop a limestone pathway around the park with distance markers which would meet ADA standards and connect parking areas to the park's activity areas
- Expand the recreation building with additional storage and garage

Justification: These items were identified at the public meeting, by observation of the park, and respond to current environmental and social recreation trends.

Figure 13. Graham Park Plan



4. Improve Community Center grounds

Proposed improvements include

- Upgrade arena with new bleachers
- Upgrade restroom building with new fixtures and screening of entrances
- Enclose picnic pavilion on the north side
- Acquire the eastern portion of the property currently being leased

Justification: These items were identified at the public meetings, by the Parks and Recreation Commission, by observation of the park, and respond to current environmental and social recreation trends.

Figure 14. Community Center Plan



5. *Develop a continuous pathway system*

Priority should be placed on the development of walkways/pathways within parks and connecting the parks to form a continuous park system tying community facilities, schools, and residential areas in Sumpter Township. This includes:

- Implement new pathways within parks as mentioned above
- Develop pathways along road corridors connecting residential areas to parks
- Work with Township Board and Planning Commission in the review of development proposals to ensure sidewalks/walkways are built in conjunction with new developments
- Install site amenities including benches, trash receptacle, mile markers, and interpretive/directional signs along the pathways
- Develop of a marketing strategy for the pathway system to attract support and sponsors including the development of a walking map and a walking club

Justification: This action is a significant priority when considering national and regional recreation trends.

6. *Acquire and dedicate parkland and community space*

Future parkland acquisition and dedication is an important action the Township should consider as opportunities arise. Desired parkland should focus on parkland in underserved areas of the Township, land contiguous to existing parks, or land that can be used for the establishment of pathways.

- Work with Township Board and Planning Commission to ensure parkland needs are considered in the review of new developments and to encourage developers to set aside land for parks or pathways

Justification: This action responds to the public input meeting and to trends related to the demographic and physical characteristics of the Township.

7. *Improve Sumpter Township recreation programs*

Facilitate and promote the use of Township parks and recreation facilities by community groups including seniors, youth groups, and public schools:

- Continue to evaluate and monitor community events and programs
- Continue to broaden the variety of activities/events offered to meet the changing needs and desires of residents
- Provide opportunities for volunteers such as park stewardship projects
- Expand the use of web-based communication tools such as facebook

Justification: This need responds to general recreation trends.

8. *Continue to forge new partnerships with other recreation providers*

Continue to increase coordination and involvement with civic organizations, public schools, adjacent community and regional recreation providers, and other private recreation groups:

- Partner with schools, neighboring communities, and other recreation providers to expand and coordinate recreation programs to avoid duplication of services and reduce costs

Justification: This need responds to recreation trends towards increased collaboration and partnerships.

9. *Administration and finance*

A means of curbing operational costs and increasing revenues where possible must continue to be a priority to support the desired park improvement projects and to maintain the existing and future park facilities to a high quality standard. Seeking grants and sponsorships where possible must be done aggressively.

- Continue to conduct fund raising events to support community events and recreation activities
- Consider setting aside a separate fund for park maintenance
- Consider adding a Township parks and recreation department to manage and operate the Township parks and recreation services

Justification: This action was identified at the public meetings, by the Parks and Recreation Commission, and by observation of the park and recreation system.

PROJECT SCHEDULE

Table 15 lists individual projects along with the specific tasks to be accomplished, the project goal/objective reference, a cost estimate, and potential funding sources. In addition, a time frame for completion has been assigned. Short-term projects (ST) are recommended for completion within one to two years, mid-term (MT) within two to five years while long-term projects (LT) may take longer to complete, within five to six years. There are also tasks that are on-going (OG).

Table 15. Project Schedule

Project/Tasks	Obj.	Cost Estimate	Funding Source	Time Frame
Bonatai Park				
Refurbish safety surface under play structure	I	To be determined	General Fund	OG
Repair and extend fishing pier	I	\$3,000	Grants & donations	ST
Install 2 drinking fountains	I	\$8,890	Grants & donations	ST
Install 2 portable restrooms with enclosures	I	\$1,500	Grants & donations	ST
Add 2 new park pavilions (24'X30') with concrete slab	II	\$12,000	Grants & donations	ST
Provide electric service to park pavilions	I	To be determined	Grants & donations	MT
Provide lighting to parking areas	I	To be determined	Grants & donations	MT
Develop/complete an access drive around the pond	II	\$8,000	Grants & donations	ST
Construct parking area on the south end of the park	II	\$8,000	Grants & donations	ST
Establish an equestrian trail linked to the roadway	II	To be determined	Grants & donations	ST
Develop/formalize hiking trails	II	To be determined	Grants & donations	ST
Construct a limestone path around the lake with distance markers connected to parking and activity areas	II	To be determined	Grants & donations	ST
Add play equipment for 0 to 5 year old within existing play area	II	To be determined	Grants & donations	MT
Add playground equipment south of the park	II	To be determined	Grants & donations	MT
Expand beach to the west	II	To be determined	Grants & donations	MT
Develop 2 sand volleyball courts	II	To be determined	Grants & donations	MT
Develop 4 horseshoe pits	II	To be determined	Grants & donations	MT
Provide a small 100' X 100' paved area for remote control car racing	II	To be determined	Grants & donations	LT
Construct restroom building on a water and septic system including a changing area to replace restrooms by the beach	II	To be determined	Grants & donations	LT
Consider adding a means to secure the park as development continues such as seasonal security gates				
Graham Park				
Install 2 drinking fountains	I	\$8,890	Grants & donations	ST
Install 4 portable restrooms with enclosures	I	\$1,500	Grants & donations	ST
Resurface basketball court	I	\$6,500	Grants & donations	ST
Construct a limestone path around the park with distance markers connected to parking and activity areas	II	To be determined	Grants & donations	ST
Add play equipment within existing play area as needed	II	To be determined	Grants & donations	MT

Project/Tasks	Obj.	Cost Estimate	Funding Source	Time Frame
Provide/repair electric service to park pavilions	I	To be determined	Grants & donations	MT
Provide lighting of parking areas	I	To be determined	Grants & donations	MT
Construct a restroom building on a water and septic system	II	To be determined	Grants & donations	LT
Expand the recreation building with additional storage and garage	II	To be determined	Grants & donations	LT
Community Center				
Repair/replace roof on picnic pavilion and railing/decking around the restrooms	I	\$7,000	Grants & donations	ST
Upgrade arena with new bleachers	II	To be determined	Grants & donations	LT
Upgrade restroom building with new fixtures and screening of entrances	II	To be determined	Grants & donations	LT
Enclose picnic pavilion on the north side	II	To be determined	Grants & donations	LT
Consider acquisition of the eastern portion of the property	IV	To be determined	Grants & donations	LT
Continuous pathway/walkway system				
Work with the Planning Commission and Township Board to implement pathways connecting residential areas to parks and community facilities	III	-	-	OG
Work with Planning Commission and Township Board to ensure pathways are built in conjunction with new developments	III	-	-	OG
Develop a walking map and club	III	\$1,000	General fund	MT
Parkland acquisition				
Work with Planning Commission and Township Board to ensure parkland needs are considered in the review of new developments and to encourage developers to set aside land for parks or pathways	IV	-	-	OG
Recreation services				
Continue to evaluate and monitor recreation programs and community events	V	-	-	OG
Maintain and develop volunteer opportunities	V	-	-	OG
Expand the use of web-based communication tools	V	-	-	MT
Partnerships				
Coordinate the shared-use of facilities with civic organizations, area sports organization, public schools, adjacent community recreation providers, and other private recreation groups	V	-	-	OG
Administration and finance				
Identify fund raising opportunities and potential grant seeking opportunities as an on-going task	VI	-	-	OG

IMPLEMENTATION STRATEGIES

In order to accomplish the recommended actions during the next five years, it will be necessary to secure adequate funding. The current budget provides a limited amount of money for parks and recreation facilities. Therefore, the following strategies are recommended in order to proceed as planned.

Apply for Federal Funding

At the federal level, the Michigan Department of Transportation (MDOT) funds Transportation Enhancement (TE) activities. To be eligible, a project must fall into one of the 12 TE activities and relate to surface transportation. A minimum 20 percent local match is required for proposed projects and applications are accepted online on an on-going basis. Activities which may apply to Sumpter Township include:

- Provision of facilities for pedestrians and bicycles including new or reconstructed sidewalks, walkways, curb ramps, bike lane striping, wide paved shoulders, bike parking, off-road trails, bike and pedestrian bridges, and underpasses
- Provision of safety and educational programs for pedestrians and bicyclists designed to encourage walking and bicycling
- Acquisition, planning, designing and constructing abandoned railway corridors

The Safe Routes to School (SR2S) program is a national movement to make it safe, convenient, and fun for children to bicycle and walk to school. In Michigan, the program is sponsored by the Michigan Governor's Council on Physical Fitness. With the passage of the federal transportation legislation in 2005, Michigan's SR2S program will make schools eligible for transportation enhancement funds, providing for infrastructure improvements and education campaigns.

The program had authorized \$612 million over five years beginning with 2005. It is unknown, at the time of this writing, what will happen with this program beyond 2010. Schools must be registered, attend a day-long training session, and develop a Walking Audit in order to be eligible to apply. SR2S funding is 100 percent federal and no match is required.

Apply for State Funding

At the state level, the Michigan Natural Resources Trust Fund (MNRTF) and the Land and Water Conservation Fund (LWCF) continue to be the primary funding sources for parkland acquisition and development.

The MNRTF provides funding for the purchase and development of parkland for natural resource-based preservation and recreation. Goals of the program are to:

- Protect natural resources and provide for their access, public use, and enjoyment
- Provide public access to Michigan's water bodies, particularly the Great Lakes, and facilitate their recreation use
- Meet regional, county and community needs for outdoor recreation opportunities
- Improve the opportunities for outdoor recreation in urban areas
- Stimulate Michigan's economy through recreation related tourism and community revitalization

Grant proposals must include a local match of at least 25 percent of the total project cost. There is no minimum or maximum for acquisition projects. For development projects, the minimum funding request is \$15,000 and the maximum is \$500,000. Applications are due in April and August for acquisition projects and April (only) for development projects.

The LWCF is a federal appropriation to the National Park Service, which distributes funds to the Michigan Department of Natural Resources and Environment for development of outdoor recreation facilities. The focus of the program has recently been on trailway systems and other community recreation needs such as playgrounds, picnic areas, skate parks, ball fields, soccer fields, and walking paths. Minimum grant requests are \$30,000 and maximum grant requests are \$75,000. The match percentage must be 50 percent of the total project cost. Applications were due on April 1st in 2010.

Other funding conducted in partnership with the MDNRE is available through other state government divisions, such as the Fisheries Division (Inland Fisheries Grant) and the Forest, Mineral, and Fire Management Division (DTE Energy Foundation Tree Planting Grant and Forest Stewardship – Outreach and Education Grant).

The Inland Fisheries Grant program considers projects that enhance habitat and fisheries, riparian property for public fishing use, water quality, and ecology. A total of \$200,000 will be available in October 2010.

The DTE Energy Foundation Tree Planting funds are available to local units of government within the service territory of DTE Energy for tree planting projects in parks, road right-of-ways, school grounds, and public lands. A total of up to \$3,000 may be granted to eligible tree planting projects on public and school property with a 50 percent local match. Applications are typically due in the fall.

Local units of government may use the Forest Stewardship program to develop a management plan for a municipal forest which would include a component targeting outreach to private landowners. A total of \$2,000 may be granted with a 50 percent local match. Applications are due in September. Nongame Wildlife Fund Grants have also been offered in the past to identify, protect, manage, and restore native plant and animal species, natural communities, and other natural features.

Apply for Other Grant Funding

There are also a variety of smaller grant programs available for the establishment of greenways/pathways or greenway-related facilities such as Bikes Belong Coalition. The Bikes Belong Coalition is sponsored by members of the American Bicycle Industry. Their mission is to put more people on bikes more often. The program funds projects in three categories: facility, education, and capacity Building. Requests for funding can be up to \$10,000 for projects such as bike paths, trails, lanes, parking, and safe routes to school. Applications are reviewed on a quarterly basis.

Seek Other Sources of Funding

Sumpter Township should investigate additional sources of funding. Seeking donations, attracting sponsors, holding fund-raising events, and seeking out other revenue sources are methods that should continue to be pursued aggressively to raise funding for park acquisition and development.

